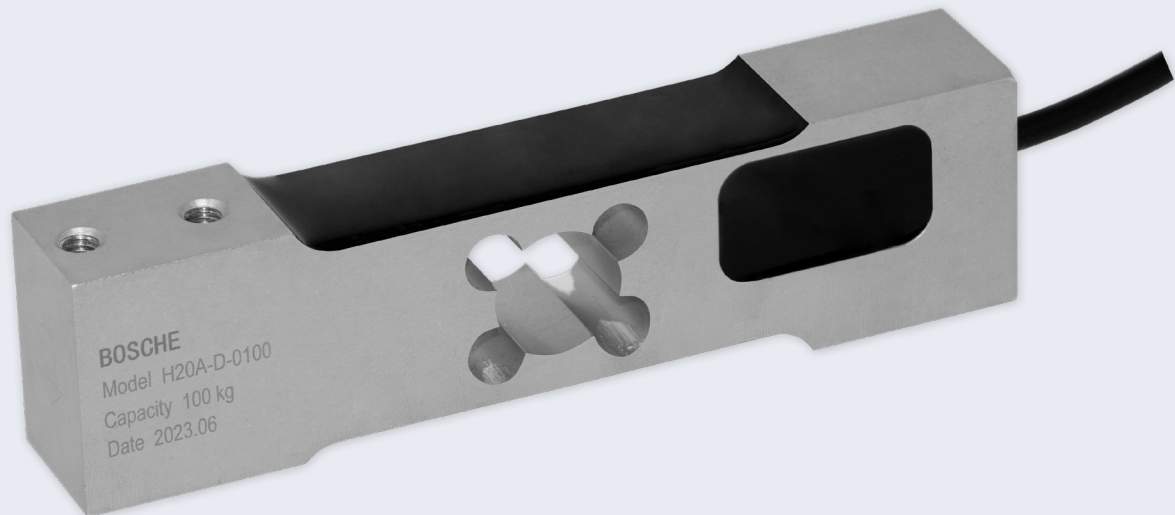


▶ Digital load cell *H20A-D*



Features

- ▶ Material: Aluminium
- ▶ Nominal load: 10, 20, 30, 50, 100 kg
- ▶ Easy communication via RS-485 half-duplex
- ▶ Integrated 24 bit A/D converter in the load cell for precise weight values
- ▶ Construction: Measuring element is potted, protection class: IP65
- ▶ Compensated corner load error
- ▶ Max. Platform size: 300 x 400 mm
- ▶ Fast integration into existing networks
- ▶ Particularly robust for tough continuous operation in industrial environments

Scope of Application

- ▶ Store Fitting
- ▶ Self-Service Shelves
- ▶ Inventory Applications
- ▶ Integrable into shelves, racks, or industrial vending machines
- ▶ Special Machinery Construction



Digital load cell H20A-D

Digital load cell made of aluminum

A 24-bit measuring amplifier integrated in the cell converts incoming analog measured values (mV/V) directly into a digital signal and outputs it. This saves costs for special external evaluation electronics for conversion and facilitates integration. Communication is simple via an RS-485 half-duplex interface. Each load cell can communicate with the user separately and independently through the digital output.

The H20A-D digital load cell delivers extremely precise and reproducible measurement results even in long-term use.

The aluminum measuring body can also be used in humid or dusty environments thanks to the IP65 protection class.

The connection cable can be adapted according to customer requirements (cable length and plug) !!!

Construction

These load cells operate on the principle of the double bending beam and thus ensure precise measurements. The design is insensitive to off-center force application and can be subjected to both compression and tension.

TECHNICAL DETAILS

Accuracy class	(without OIML certificate)	C3
Maximum capacity (E_{max})	kg	10, 20, 30, 50, 100
Maximum number of intervals (n_{LC})		3000
Minimum dead load (E_{min}):		0
Limit load (EL):	% von E_{max}	150
Breaking load (E_d):	% von E_{max}	300
Inrush current	mA	45
Power input	mA	20 – 50
Max. Measuring resolution	Parts	30.000
Adjustable cut-off frequency of the digital filter	Hz	0,25 – 5
Baud rate	bps	38.400
Number of bus users		128
Recommended supply voltage (U_{rel})	V	5 - 9
Insulation resistance	MΩ	>2.000
Nominal temperature range (BT)	°C	- 10 ... + 40
Operating temperature range		0..... + 50
Protection class (DIN 40.050 / EN 60529)	IP	65
Material		Aluminium

TECHNICAL DRAWINGS

