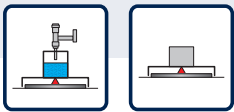
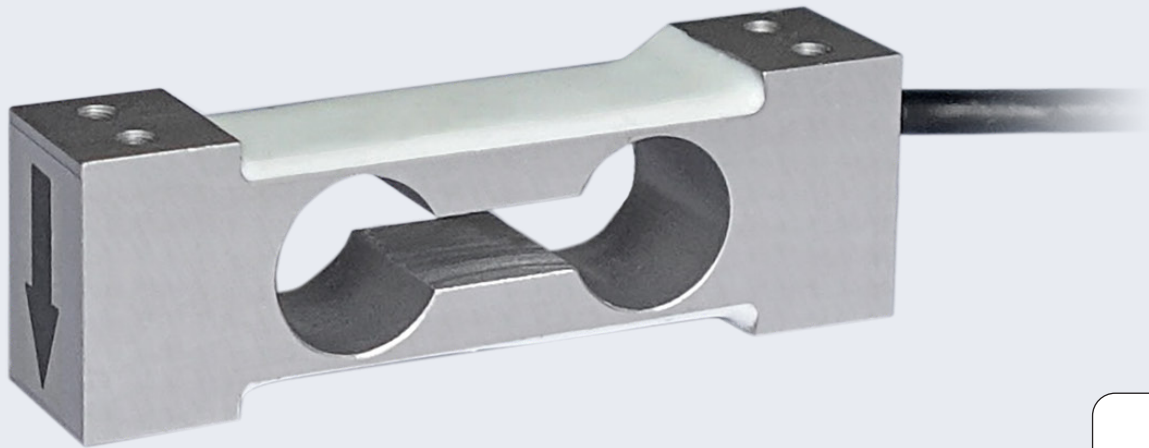


▶ Miniature Load Cell *H07A*



Features

- ▶ Material: Aluminum
- ▶ Capacity: 2 - 5 kg
- ▶ Construction: The measuring element is potted
- ▶ Protection class: IP65
- ▶ Compensated Corner load errors
- ▶ Max. Platform size: 200 x 200 mm
- ▶ Low profile
- ▶ Compatible with other manufacturers

Scope of application:

- ▶ Precision scales
- ▶ Postal/logistics scales
- ▶ Dosing scales
- ▶ Automatic filling machines
- ▶ Plant construction
- ▶ Force measurement (e.g. thread tension measurement in the textile industry)

Miniature Load Cell H07A

Single point load cells for platform scales

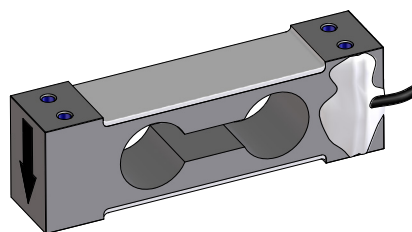
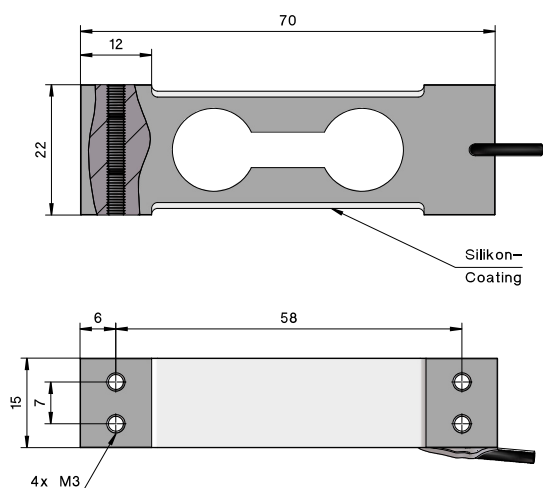
The H07A is a flat-built platform load cell made of aluminium. It is suitable for smaller and inexpensive platform scales with one load cell. The load cell provides extremely precise and reproducible measurement results even in long-term use. This load cell is designed for small platform sizes up to 200 x 200 mm.

As standard, the H07A load cells are tested and optimised for corner load sensitivity. This means that no measurement errors occur even if the platform is only loaded in one corner. The load cell is encapsulated and meets the requirements of protection class IP66.

TECHNISCHE DETAILS

Accuracy class		G
Nominal load (E_{max})	kg	2, 3, 5
Number of division values (n_L)		3000
Nominal value (C_n) / Characteristic tolerance	mV/V	$2,00 \pm 0,2$
Minimum preload (E_{min})		0
Limit load (E_L)	% from E_{max}	150
Breaking load (E_B)		200
Recommended supply voltage (U_{rel})	V	5 - 12
Maximum permissible supply voltage (B_U)		15
Max. Platform size	mm	200 x 200
Input resistance (R_{LC}) at reference temperature	Ω	415 ± 20
Output resistance (R_o) at reference temperature		350 ± 3
Insulation resistance	M Ω	> 2 000
Nominal temperature range (B_T)	°C	- 10 ... + 40
Protection class according to (DIN 40.050 / EN 60529)		IP65
Cable length / diameter		1 m / \varnothing 3 mm
Material		Aluminium

TECHNICAL DRAWINGS



Elektrischer Anschluss
4-Leiter - Kabel

