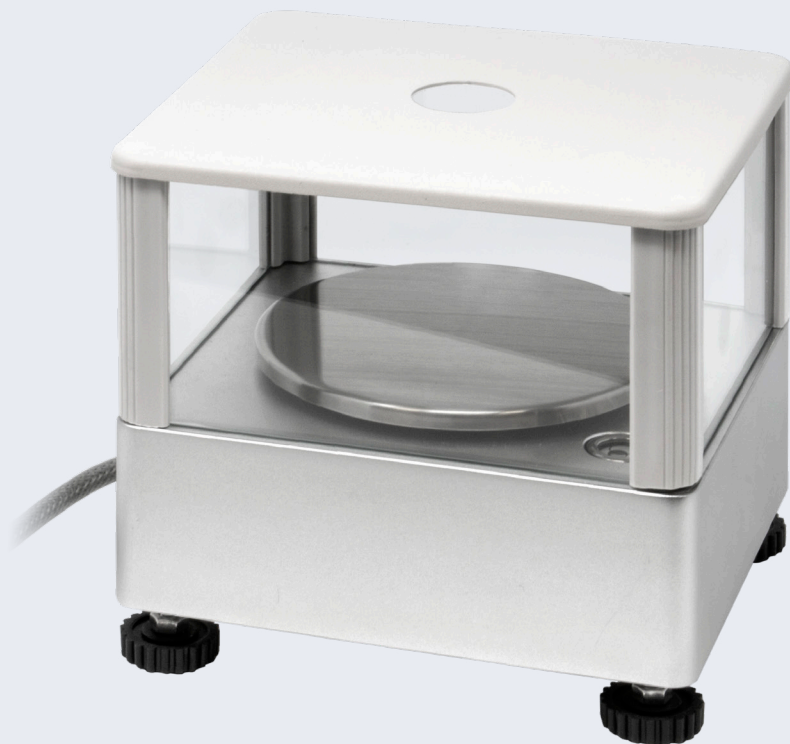


Precision platform *FW*



Features

- ▶ Stainless steel platform
- ▶ Weighing range 300 g / 1500 g / 3000 g
- ▶ Mains operation as standard
- ▶ Adjustable automatic switch-off
- ▶ Handy and space-saving
- ▶ Spirit level and foot screws for exact levelling of the scale as standard
- ▶ Draft shield housing included (only for weighing plate size 120 mm)
- ▶ Power supply: Mains connection



Precision platform *FW*

The FW precision platform has been specially developed for simple applications in laboratories, schools and industry.

The precision scale sends weight data directly to a PC. The direct application of force to a strain gauge load cell enables high resolution and high-precision weighing and counting.

An optimal protection can be guaranteed by a stainless steel platform with a robust aluminum housing. The precision scales up to 1,500 g are equipped with a Ø 120 mm stainless steel platform.

The draft shield with removable lid is included with the round models. The 3000 g scales have a 155 x 145 mm platform.

Easy operation

The user-friendly interface allows even little experienced staff and students to use the laboratory scale FW. All the main functions have their own button on the control panel.

Power supply and interfaces

The scales are supplied as standard for mains operation (mains plug included).

► TECHNICAL DETAILS

Type	Weighing plate	Weighing range, Max	Readability, d	Linearity
Precision Platform FW 300	120 mm Ø	300 g	0,1 g	± 0,03 g
Precision Platform FW 1500	120 mm Ø	1.500 g	0,2 g	± 0,03 g
Precision Platform FW 3000	155 x 145 mm	3.000 g	0,5 g	± 0,15 g

► TECHNICAL DRAWINGS

