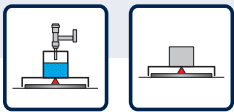


Single point load cell H20A

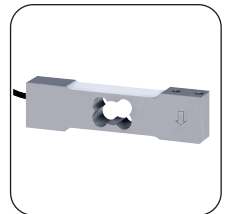


Features

- ▶ Material: Aluminium
- ▶ Capacity: 2 - 100 kg
- ▶ Accuracy class C3, $\gamma=10.000$
- ▶ Approved to OIML R60 up to 3000d
- ▶ Design: The measuring element is potted, Protection class: IP 65
- ▶ Off center load compensated
- ▶ Load Cell is suitable for platform sizes up to 300 x 400 mm
- ▶ Robust flat design for harsh industrial environment
- ▶ Compatible with other sources

Scope of application:

- ▶ Inexpensive platform scales
- ▶ Bench scales and counting scales
- ▶ Filling and dosing systems
- ▶ Dosing scales
- ▶ Filling machines
- ▶ Filling scales
- ▶ Checkweighers
- ▶ Force sensors for measuring small forces.



Single point load cell H20A

Platform load cell with high spring stiffness

The H20A is an aluminium platform load cell with high spring stiffness. It is designed for low-cost, medium platform scales with one load cell and class III commercial scales. As standard, the H20A load cells are tested and optimised for corner load sensitivity. This means that no measurement errors occur even if the scale is only loaded

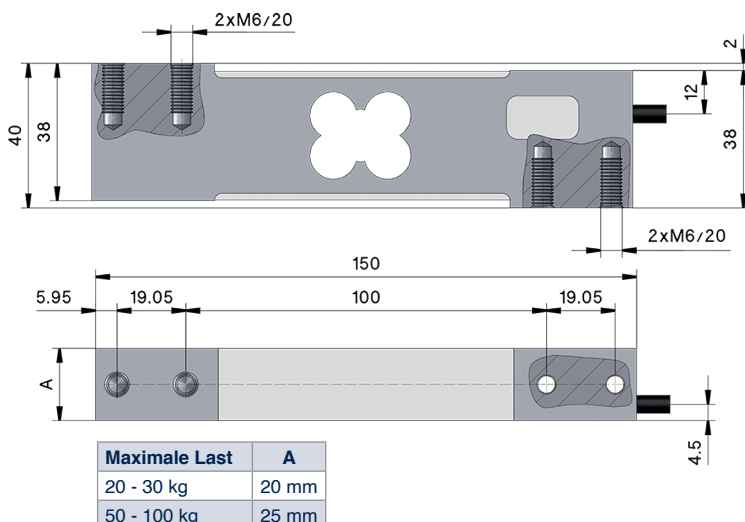
in one corner.

The H20A load cell is legal for trade up to 3000D according to OIML, R60 and delivers extremely precise and reproducible measuring results even in long-term use. The load cell is potted and meets the requirements of protection class IP65.

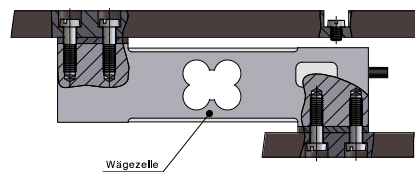
TECHNICAL DETAILS

Accuracy class according to OIML R 60		C3
Nominal load (E_{max})	kg	20, 30, 50, 100
Number of division values (n_{LC})		3000
Nominal value (C_n) / Characteristic tolerance	mV/V	$2,0 \pm 0,2$
Characteristic value of the relative minimum division value d. WZ ($Y = E_{max} / v_{min}$)	% from E_{max}	10 000
Minimum preload (E_{min})		0
Grenzlast (E_L) Bruchlast (E_B)	% from E_{max}	150 300
Recommended supply voltage (U_{ref}) Maximum permissible supply voltage (B_U)	V	5 - 12 15
Zero adjustment	% v. C_n	3
Input resistance (R_{LC}) at reference temperature Output resistance (R_O) at reference temperature	Ω	404 ± 10 350 ± 3
Insulation resistance	$M\Omega$	> 5.000
Nominal temperature range (B_T)	$^{\circ}C$	- 10 ... + 40
Protection class according to (DIN 40.050 / EN 60529)		IP65
Cable length		1,8 m
Material		Aluminium
Maximum platform size	mm	300 x 400

TECHNICAL DRAWINGS



Einbaubeispiel



Elektrischer Anschluss 4-Leiter - Kabel

