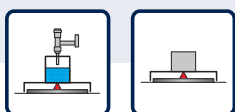


# ► Single point load cell *H10A*

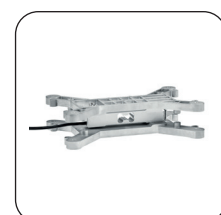
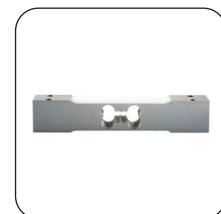


## Features

- Material: aluminium
- Nominal load: 8 - 40 kg
- Accuracy class C3,  $Y=10.000$
- Verifiable according to OIML R60 up to 3000D
- Construction: The measuring element is encapsulated
- Protection class: IP 65
- Compensated corner load error
- Max. Platform size: 300 x 300 mm
- Low construction height
- Compatible with load cells from other manufacturers

### *Scope of application:*

- Smaller platform scales
- Sales scales and postal scales
- Checkweighers and counting scales
- Gas cylinder scales
- Filling scales and dosing scales
- Personal scales and other medical scales



# Single point load cell H10A

## Verifiable single point load cells for platform scales

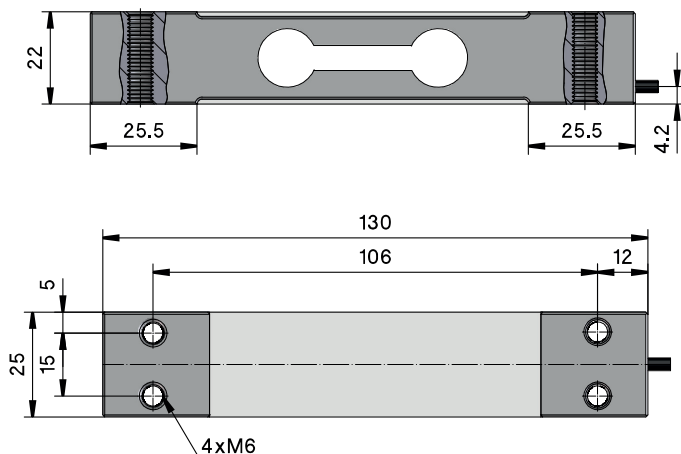
The H10A is a flat-built platform load cell made of aluminium. It is suitable for smaller and low-cost platform scales with one load cell and for class III commercial scales. The H10A load cell is legal for trade up to 3000D according to OIML, R60 and provides extremely precise and reproducible measurement results even in long-term use.

As standard, the H10A load cells are tested and optimised for corner load sensitivity. This means that no measurement errors occur even if the platform is only loaded in one corner. The load cell is encapsulated and meets the requirements of protection class IP65.

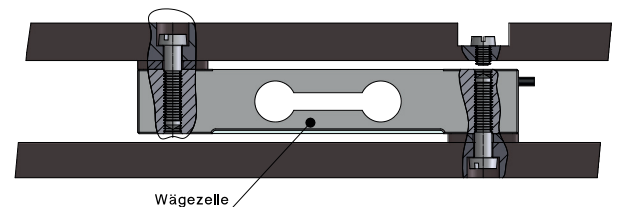
## TECHNICAL DETAILS

Accuracy class according to OIML R 60		C3
Nominal load ( $E_{max}$ )	kg	8, 10, 15, 20, 30, 35, 40
Number of division values ( $n_{LC}$ )		3000
Nominal value ( $C_n$ ) / Characteristic tolerance	mV/V	2,0 ± 0,2
Characteristic value of the relative minimum division value d. WZ ( $Y = E_{max} / v_{min}$ )	% from $E_{max}$	10 000
Minimum preload ( $E_{min}$ )		0
Grenzlast ( $E_L$ ) Bruchlast ( $E_d$ )	% from $E_{max}$	150 300
Recommended supply voltage ( $U_{ref}$ ) Maximum permissible supply voltage ( $U_W$ )	V	5 - 12 15
Zero adjustment	% v. $C_n$	3
Input resistance ( $R_{LC}$ ) at reference temperature Output resistance ( $R_O$ ) at reference temperature	$\Omega$	404 ± 10 350 ± 3
Insulation resistance	M $\Omega$	> 2 000
Nominal temperature range ( $B_T$ )	°C	- 10 ... + 40
Protection class according to (DIN 40.050 / EN 60529)		IP65
Encapsulation		Kunststoffverguss
Cable length / diameter		1 m / $\varnothing$ 5 mm
Material		Aluminium
Maximum platform size	mm	300 x 300

## TECHNICAL DRAWINGS



### Einbaubeispiel



### Elektrischer Anschluss 4-Leiter - Kabel

