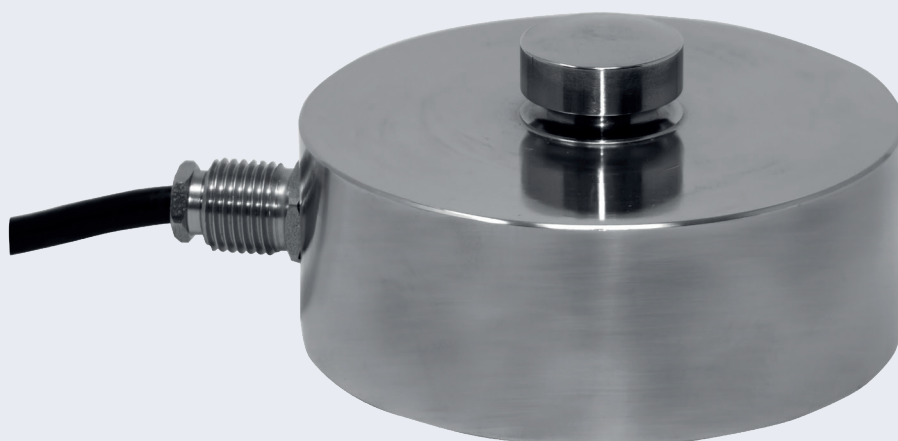


▶ Compression Load cell V71N



Features

- ▶ Compression load cell for containers and silos
- ▶ Material: stainless steel construction 17-4 PH
- ▶ Nominal load: 250 - 10,000 kg
- ▶ Protection class: IP68
- ▶ Construction: Measuring element is laser-welded
- ▶ Load application: Central free-swinging force application
- ▶ Robust and overload-proof for long service life
- ▶ Suitable mounting modules for a wide range of container types

Scope of application:

- ▶ Weighing systems for tank and silo systems
- ▶ In food and pharmaceutical industry
- ▶ Measuring of compressive forces
- ▶ General force measurement



Compression Load cell V71N

Low load cell with central force application

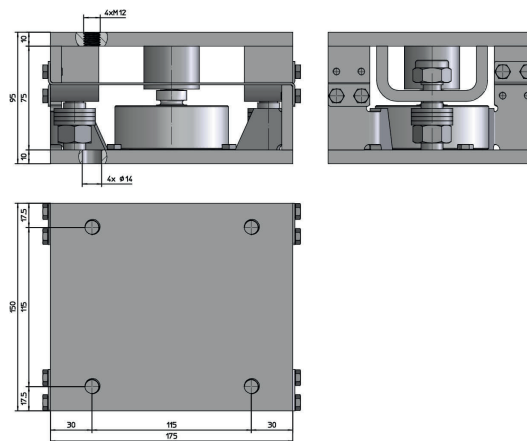
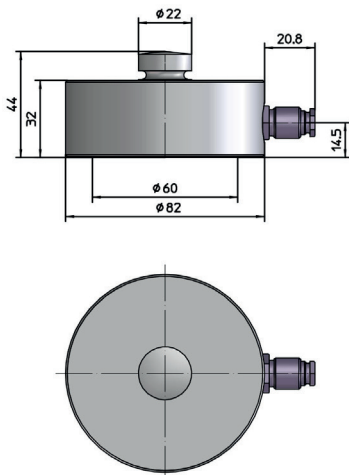
The V71N stainless steel load cell is a low profile load cell for compression loading. The electro-polished stainless steel construction in its hygienic design is optimally suited for environments with high demands on cleanliness and hygiene. Due to the central, free-swinging force application, this compression

load cell is largely insensitive to eccentric or lateral loads. The load cell is made of high-quality stainless steel, hermetically laser-welded and meets the requirements of protection class IP68.

TECHNICAL DETAILS

Accuracy class according to OIML R 60		0,03
Nominal load (E_{max})	kg	250, 500, 1.000, 2.500, 5.000, 10.000
Number of division values (n_{LC})		3000
Nominal value (C_n) / Characteristic tolerance	mV/V	2,0 / $\pm 0,01$
Minimum preload (E_{min})		0
Limit load (E_L)	% von E_{max}	150
Breaking load (E_B)		300
Recommended supply voltage (U_{ref})	V	5 - 15
Maximum permissible supply voltage (B_U)		15
Zero adjustment	% v. C_n	$\leq \pm 1\%$
Input resistance (R_{LC}) at reference temperature	Ω	700 \pm 10
Output resistance (R_o) at reference temperature		700 \pm 10
Insulation resistance	M Ω	> 10.000
Nominal temperature range (B_T)	$^{\circ}C$	- 10 ... + 40
Protection class according to (DIN 40.050 / EN 60529)		IP68
Cable length		5m (0.5-10t)
Material		Stainless steel

TECHNICAL DRAWINGS



Example of assembly

Electrical connection

6-wire technology

