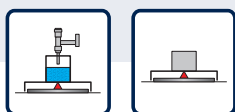
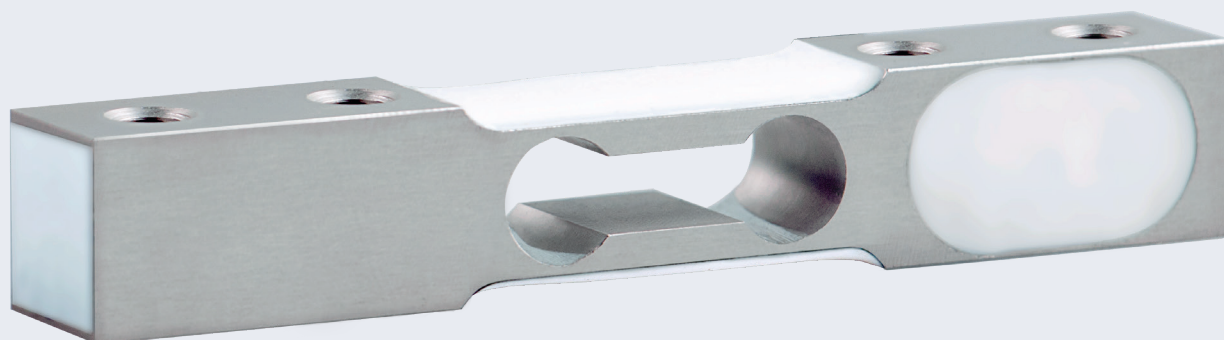


▶ Miniature Load Cell *H08A*



Features

- ▶ Material: aluminium
- ▶ Nominal load: 1 - 5 kg
- ▶ Construction: The measuring element is encapsulated
- ▶ Protection class: IP 65
- ▶ Compensated corner load error
- ▶ Max. Platform size: 120 x 120 mm
- ▶ Very low construction height
- ▶ Compatible with load cells from other manufacturers



Scope of application:

- ▶ Kitchen scales
- ▶ Postal/logistics scales
- ▶ Automatic filling machines
- ▶ Checkweighers
- ▶ Scales for medical applications
- ▶ Force measurement (e.g. thread tension measurement in the textile industry)

Miniature Load Cell H08A

Single point load cells for platform scales

The H08A is an ultra-compact miniature aluminium platform load cell. It is suitable for small and very inexpensive scales with a platform size of up to 120 x 120 mm. Due to its compact, flat design, it is particularly suitable when only limited installation space is available, such as in instrument engineering. The miniature sensor delivers extremely precise and reliable measurement results even in long-term use.

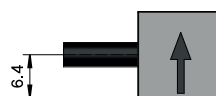
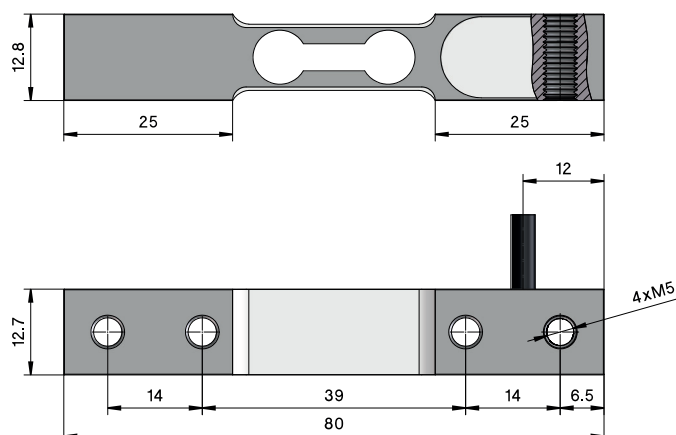
As standard, the H08A load cells are temperature compensated, tested for corner load sensitivity and optimised. This means that no measuring errors occur even if the platform is only loaded in one corner.

The measuring body is made of aluminium, the strain gauge is encapsulated and meets the requirements of protection class IP65.

TECHNICAL DETAILS

Accuracy class		G3
Nominal load (E_{\max})	t	1, 2, 3, 5
Number of division values (n_{LC})		3000
Nominal value (C_n) / Characteristic tolerance	mV/V	$2,00 \pm 0,005$
Minimum preload (E_{\min})		0
Overload range	% from E_{\max}	150
Recommended supply voltage (U_{ref})	V	5 - 10
Maximum permissible supply voltage (B_U)		15
Zero adjustment	% v. C_n	± 1
Max. Platform size	mm	120 x 120
Input resistance (R_{LC}) at reference temperature	Ω	410 ± 10
Output resistance (R_O) at reference temperature		350 ± 3
Insulation resistance	M Ω	> 2 000
Nominal temperature range (B_T)	°C	- 10 ... + 50
Protection class according to (DIN 40.050 / EN 60529)		IP65
Cable length / diameter		0,2 m / \varnothing 3 mm
Material		Aluminium

TECHNICAL DRAWINGS



Elektrischer Anschluss 4-Leiter - Kabel

