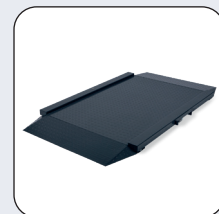
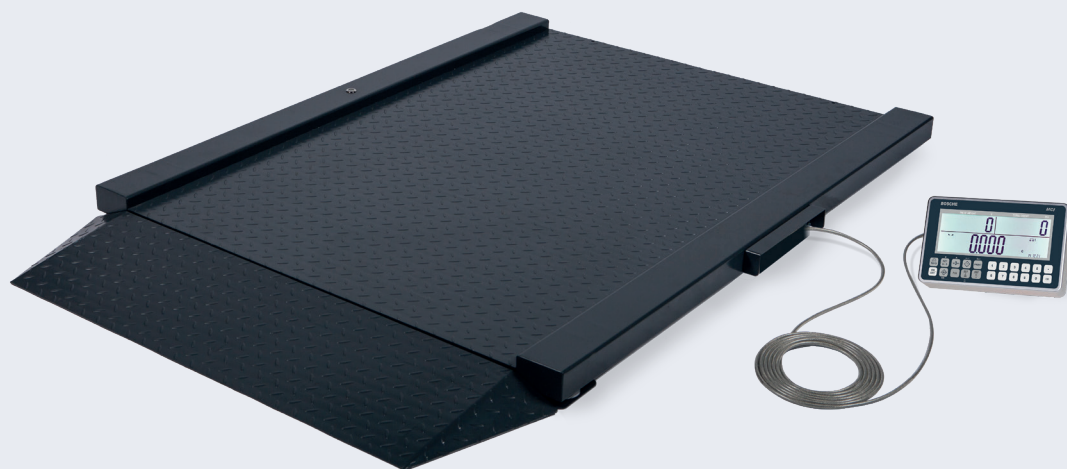


Roll Through Scale *DSI C*

M



Functions & Features

- ▶ Extra sturdy construction (Drive-up height only 45 mm)
- ▶ Weighing bridge made of powder-coated channelled sheet steel
- ▶ Capacity 600 kg / 1500 kg
- ▶ Standard sizes 1200 x 1800 mm (Drive-through dimensions: 1000 x 1500 mm)
- ▶ Can be set up with one or two ramps
- ▶ Four laser-welded stainless steel load cells, IP 68
- ▶ Load cells and cabling installed inside the platform for extra protection
- ▶ Height-adjustable feet and a spirit level allow levelling of the platform
- ▶ Industrial plug M12, fully encased
- ▶ Maintenance and wear-free design of the weighing technology
- ▶ Overrun protection optional
- ▶ Top-quality shielded data cable
- ▶ Display can be disconnected from bridge even with calibrated weighing systems
- ▶ Legal for trade according to accuracy class III
- ▶ Counting display MCI-T (verifiable) and GTW-T (non-verifiable) in aluminium housing
- ▶ Basic functions: Tare across 100 % of weighing range, zero, gross/net, manual tare
- ▶ Summing of weights and numbers of pieces
- ▶ Reference piece count variable with optimisation function for even more accurate counting
- ▶ Three illuminated displays - Weight, piece weight and quantity
- ▶ Acoustic signal when set values are reached or exceeded
- ▶ Numeric keypad for input of piece weights, target piece numbers and tare
- ▶ Various interfaces for printer, hand-held scanner or PC
- ▶ Alibi memory module for verifiable storage data
- ▶ Shipped with table and wall mount as standard
- ▶ It is possible to connect a reference scale

Roll Through Scale *DSI C*

Bosche Roll-through counting Scales series DSI C

The drive-through scales of the DSI series are particularly suitable for rough use in industry. The verifiable roll-through counting scale DSI MC is a precise counting scale for fast counting equal weight parts. A piece weight, tare weight or a target piece count can be entered via the numeric keypad.

Konstruktion

Standard size: 1200 x 1800 mm

Weighing area: 1000 x 1500 mm

Weighing capacity: 600 kg / 1500 kg

Installation variants: Above-ground set-up with one or two ramps. Made of powder-coated channelled sheet steel. The platforms are fitted with four laser-welded high-quality DMS load cells, IP 68.

Weighing technology - Legal for trade

Evaluation electronics: BOSCHE MCI-T oder GTC-T

The DSI C in combination with the MCI-T is legal for trade (in accordance with the requirements of the International Organisation for Legal Metrology - OIML) and complies with the guidelines of accuracy class III. Alibi memory module for verifiable storage data.



Power Supply and Interfaces

The floor scale is supplied as standard for mains operation (mains plug included). The RS 232 interface allows a bidirectional data transfer of weight data to a PC, printer or remote display.

Optional accessories

Second Display, Printer, Stand, additional RRS232-Interface, Akkumulator, Signal lamp with traffic light function

TECHNICAL DETAILS

| Type (Non calibratable) | Capacity | Readability of the scale, d |
|---|----------|-----------------------------|
| DSI 1015 GTC-T 600 | 600 kg | 200 g |
| DSI 1015 GTC-T 1500 | 1.500 kg | 200 g |
| Type (Calibratable) | Capacity | Calibration value, e |
| DSI 1015 MCI-T 600  | 600 kg | 200 g |
| DSI 1015 MCI-T 1500  | 1.500 kg | 500 g |

