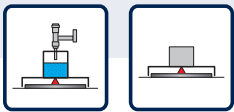
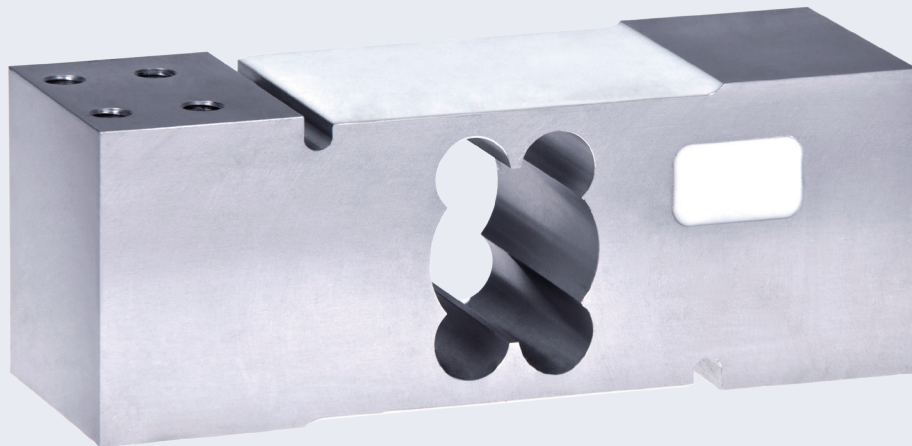
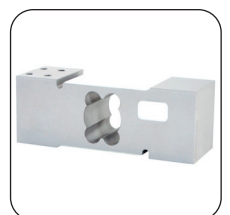


► Single point load cell *H42A*



Features

- Material: Aluminium
- Capacity: 150 - 750 kg
- Accuracy class C3, $Y=10.000$
- Approved to OIML R60 up to 3000d
- Design: The measuring element is potted
- Protection class: IP 65
- Off center load compensated
- Load Cell is suitable for platform sizes up to 600 x 600 mm
- Robust flat design for harsh industrial environment
- Compatible with other sources



Single point load cell H42A

Robust aluminium load cell

The H42A is a platform load cell (also known as a double bending beam load cell) made of aluminium. It is suitable for larger, low-cost platform scales with one load cell, as well as class III commercial scales. The robust construction offers high protection against lateral forces and makes it suitable for a wide range of weighing applications. As standard, the H42A load cells are tested and optimised for corner load sensitivity. This means that

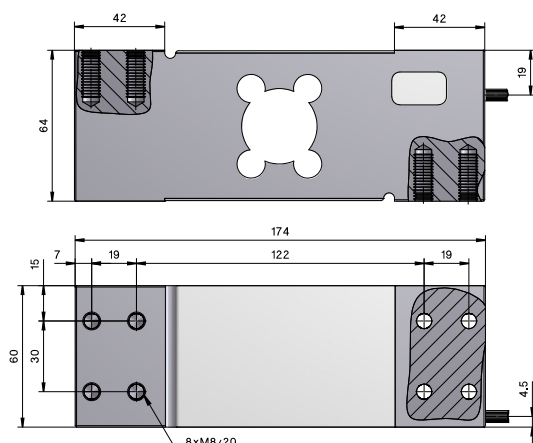
no measuring errors occur even if the platform is only loaded in one corner.

The H42A load cell is legal for trade up to 3000D according to OIML, R60 and delivers extremely precise and reproducible measuring results even in long-term use. The load cell is made of aluminium, the strain gauge is encapsulated so that the cell meets the requirements of protection class IP65.

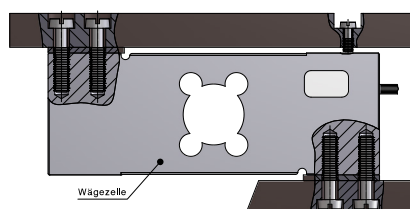
TECHNICAL DETAILS

Accuracy class according to OIML R 60		C3
Nominal load (E_{max})	kg	150, 200, 250, 300, 500, 750
Number of division values (n_{LC})		3000
Nominal value (C_n) / Characteristic tolerance	mV/V	$2,0 \pm 0,2$
Characteristic value of the relative minimum division value d. WZ ($Y = E_{max} / v_{min}$)	% from E_{max}	15.000
Minimum preload (E_{min})		0
Grenzlast (E_L) Bruchlast (E_B)	% from E_{max}	150 300
Recommended supply voltage (U_{ref}) Maximum permissible supply voltage (B_U)	V	5 - 12 15
Zero adjustment	% v. C_n	0,2
Input resistance (R_{LC}) at reference temperature Output resistance (R_O) at reference temperature	Ω	404 ± 10 350 ± 3
Insulation resistance	M Ω	> 2.000
Nominal temperature range (B_T)	°C	- 10 ... + 40
Protection class according to (DIN 40.050 / EN 60529)		IP65
Cable length		1,8 m
Material		Aluminium
Maximum platform size	mm	600 x 600

TECHNICAL DRAWINGS



Einbaubeispiel



Elektrischer Anschluss 4-Leiter - Kabel

