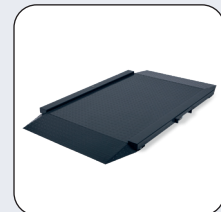
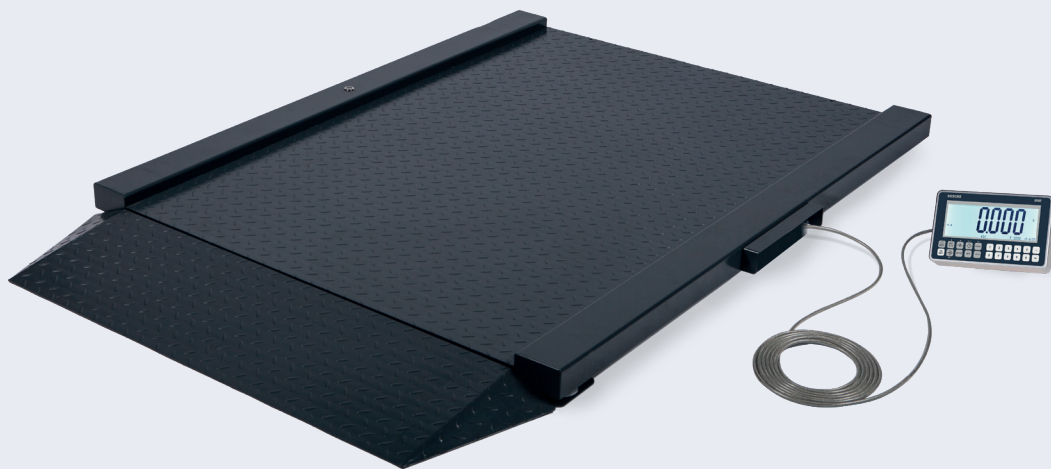


# Roll Through Scale *DSI W*

**M**



## Functions & Features

- ▶ Extra sturdy construction (Drive-up height only 45 mm)
- ▶ Weighing bridge made of powder-coated channelled sheet steel
- ▶ Capacity 600 kg / 1500 kg
- ▶ Standard sizes 1200 x 1800 mm (Drive-through dimensions: 1000 x 1500 mm)
- ▶ Can be set up with one or two ramps
- ▶ Four laser-welded stainless steel load cells, IP 68
- ▶ Load cells and cabling installed inside the platform for extra protection
- ▶ Height-adjustable feet and a spirit level allow levelling of the platform
- ▶ Industrial plug M12, fully encased
- ▶ Maintenance and wear-free design of the weighing technology
- ▶ Overrun protection optional
- ▶ Top-quality shielded data cable
- ▶ Display can be disconnected from bridge even with calibrated weighing systems
- ▶ Legal for trade according to accuracy class III
- ▶ Counting display MCI-T (verifiable) and GTW-T (non-verifiable) in aluminium housing
- ▶ Basic functions: Tare across 100 % of weighing range, zero, gross/net, manual tare
- ▶ Totalization - memory storing the number of weighings and the resulting total weight
- ▶ Checkweighing by setting a target weight and tolerances for target value control
- ▶ Well legible illuminated 60 mm LCD large display with 50 mm digit height
- ▶ Intuitive handling through rugged membrane keypad
- ▶ Numeric keypad for entering manual tare weight or target values
- ▶ Various interfaces for printer, hand-held scanner or PC
- ▶ Alibi memory module for verifiable storage data
- ▶ Shipped with table and wall mount as standard

## Roll Through Scale *DSI W*

### Bosche Roll-through series DSI W

The drive-through scales of the DSI series are particularly suitable for rough use in industry. The DSI W is a high-performance drive-through scale which is suitable for complex weighing applications in both legal-for-trade and non-legal-for-trade applications. A tare weight or setpoint can be entered via the numeric keypad.

#### Construction

Standard size: 1200 x 1800 mm

Weighing area: 1000 x 1500 mm

Weighing capacity: 600 kg / 1500 kg

Installation variants: Above-ground set-up with one or two ramps. Made of powder-coated channelled sheet steel. The platforms are fitted with four laser-welded high-quality DMS load cells, IP 68.

### Weighing technology - Legal for trade

Evaluation electronics: BOSCHE MWI-T oder GTW-T

The DSI W in combination with the MWI-T is legal for trade (in accordance with the requirements of the International Organisation for Legal Metrology - OIML) and complies with the guidelines of accuracy class III. Alibi memory module for verifiable storage data.

#### Power Supply and Interfaces

The floor scale is supplied as standard for mains operation (mains plug included). The RS 232 interface allows a bidirectional data transfer of weight data to a PC, printer or remote display.

#### Optional accessories

2. Ramp, Overrun protection, Second Display, Printer, external Remote display, Stand, Signal lamp with traffic light function, Akkumulator

### TECHNICAL DETAILS

Type (Non calibratable)	Capacity	Readability of the scale, d
DSI 1015 GTW-T 600	600 kg	200 g
DSI 1015 GTW-T 1500	1.500 kg	200 g
Type (Calibratable)	Capacity	Calibration value, e
DSI 1015 MWI-T 600 ■	600 kg	200 g
DSI 1015 MWI-T 1500 ■	1.500 kg	500 g

