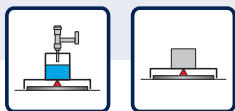
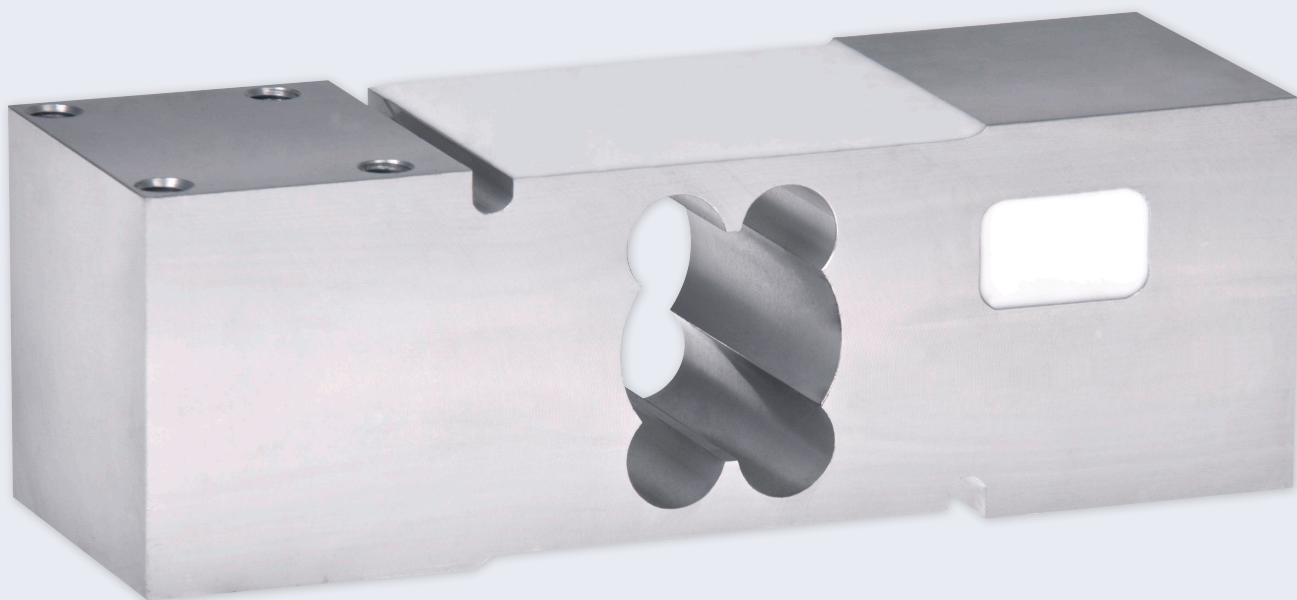


Single point load cell H44A

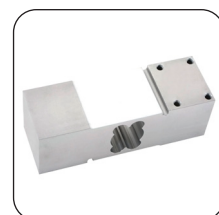
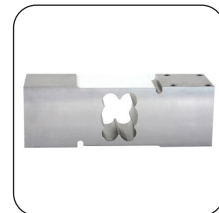


Features

- ▶ Material: aluminium
- ▶ Nominal load: 150-750 kg
- ▶ Accuracy class C3, $\gamma=7.000$
- ▶ Verifiable according to OIML R60 up to 4000D
- ▶ Construction: The measuring element is encapsulated
- ▶ Protection class: IP 65
- ▶ Compensated corner load error
- ▶ Max. Platform size: 600 x 800 mm
- ▶ Very inexpensive and robust design
- ▶ Particularly suitable for continuous use in industrial applications
- ▶ Compatible with load cells from other manufacturers

Scope of application:

- ▶ Medium and larger platform scales
- ▶ Bench scales and shop scales
- ▶ Checkweighers and counting scales
- ▶ Airport scales
- ▶ Filling scales and dosing scales
- ▶ Tensile and compressive force measurements



Single point load cell H44A

Verifiable single point load cells for platform scales

The H44A is an aluminium platform load cell. It is suitable for medium and larger platform scales with one load cell and for class III commercial scales.

The H44A load cell is legal for trade up to 3000D according to OIML, R60 and provides extremely precise and reproducible measurement results even in long-term use.

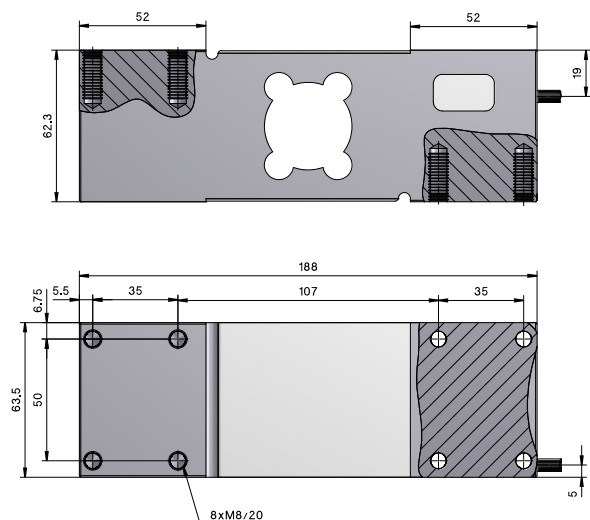
As standard, the H44A load cells are tested and optimised for corner load sensitivity. This means that no measurement errors occur even if the platform is only loaded in one corner.

The load cell is potted and meets the requirements of protection class IP65.

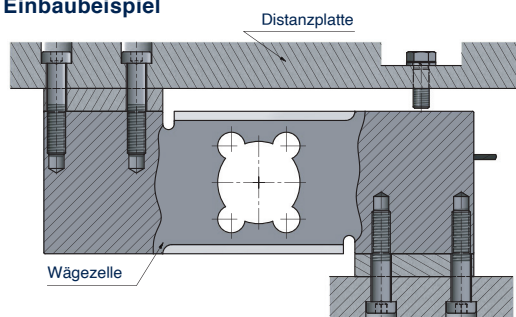
TECHNICAL DETAILS

Accuracy class according to OIML R 60		C3
Nominal load (E_{max})	kg	100, 150, 200, 250, 300, 500, 750
Number of division values (n_{LC})		3000
Nominal value (C_n) / Characteristic tolerance	mV/V	$2,0 \pm 0,2$
Characteristic value of the relative minimum division value d. WZ ($Y = E_{max} / v_{min}$)	% from E_{max}	7 000
Minimum preload (E_{min})		0
Grenzlast (E_L) Bruchlast (E_B)	% from E_{max}	150 300
Recommended supply voltage (U_{ref})	V	5 - 12
Maximum permissible supply voltage (B_U)		15
Zero adjustment	% v. C_n	$\pm 0,2$
Input resistance (R_{LC}) at reference temperature	Ω	404 ± 10
Output resistance (R_O) at reference temperature		350 ± 3
Insulation resistance	M Ω	$> 2\,000$
Nominal temperature range (B_T)	$^{\circ}\text{C}$	- 10 ... + 40
Protection class according to (DIN 40.050 / EN 60529)		IP65
Cable length	m	1,8
Material		Aluminium
Maximum platform size	mm	300 x 300

TECHNICAL DRAWINGS



Einbaubeispiel



Elektrischer Anschluss

4 -Leiter - Kabel

