

Double Shear Beam load cell *D56S*



Features

- ▶ Material: alloy steel, nickel-plated
- ▶ Capacity: 10.000 - 30.000 kg
- ▶ Construction: The measuring element is laser-welded
- ▶ Protection class: IP 66
- ▶ Easy to install
- ▶ Rugged for off-road use
- ▶ Compatible with other manufacturers



Area of application

- ▶ Silo scales, Tank scales
- ▶ On board vehicle weighing systems
- ▶ „On board“ weighing system to prevent overloading of vehicles

Double Shear Beam load cell D56S

Double Shear Beam Load Cell with parallel load input

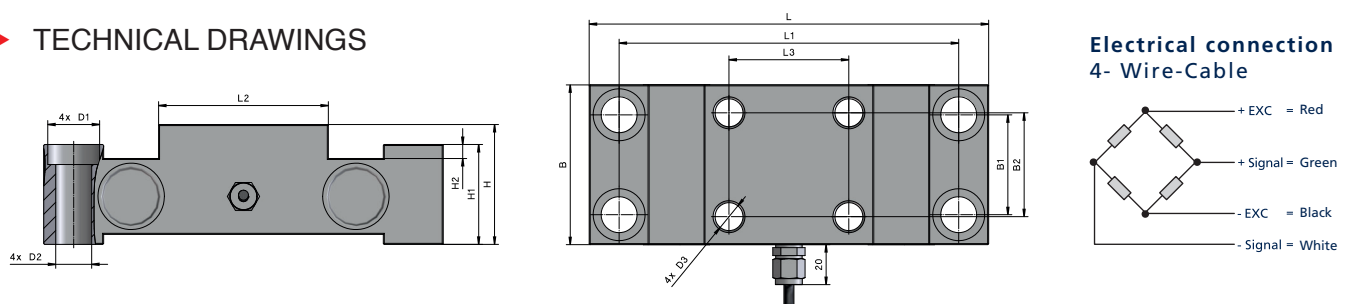
The D56S is a double shear load cell with parallel load input made from high-quality, alloyed tool steel. It is a heavy duty load cell for on board weighing applications such as container weighing in vehicles with and without trailers.

The load cell D56S is a load cell with a high performance potting for superior environmental protection. It is primer painted for use in harsh industrial applications. The load cell is laser welded and meets the requirements of protection class IP66.

TECHNICAL DETAILS

Accuracy class		G2
Maximum capacity (E_{max})	kg	10.000, 20.000, 30.000, 40.000, 50.000
Maximum number of intervals (n_{Lo})		2000
Output sensitivity (C_n)	mV/V	1,8±0,005 (10, 40, 50t); 1,2±0,005 (30t), 2±0,005 (20t)
Minimum dead load (E_{min})		0
Limit load (EL)	% von Emax	150
Breaking load (Ed):	% von Emax	300
Recommended supply voltage (Uref) Excitation, maximum (BU)	V	5 - 12 15
Zero balance	% v. Cn	± 1
Input resistance (RLC) at reference temperature	Ω	750 ± 10
Output resistance (RO) at reference temperature	Ω	702 ± 3
Insulation resistance	MΩ	> 5 000
Nominal temperature range (BT)	°C	- 10 ... + 40
Protection class (DIN 40.050 / EN 60529)		IP 66
Cable length		On request
Material		Alloyed steel

TECHNICAL DRAWINGS



Maximum capacity, t	L	L1	L2	L3	B	B1	B2	H	H1	H2	D1	D2	D3
10	200	170	85	60	80	50	50	60	50	7	26	18	M16
20, 30	300	240	110	60	120	70	70	120	115	28	43	26	M24
40, 50	300	240	110	60	150	70	80	120	115	30.5	43	26	M24

All dimensions are given in millimetres (mm)
Technical specifications are subject to change without prior notice